



WETLAND WAVE

JOIN THE WETLAND WAVE!

AN URBAN / AG PARTNERSHIP

Partnering with local agencies and landowners to improve water quality and reduce flooding.

WHEN IT COMES TO THE FUTURE OF CONSERVATION IN IOWA, LANDOWNERS PLAY A PIVOTAL ROLE IN OUR ABILITY TO IMPROVE OUR WATER QUALITY.

Wetlands reduce flooding, increase wildlife habitat, and provide numerous ecosystem services to the environment such as cleaner water downstream, carbon sequestration, and preventing soil from leaving our landscape. Moreover, many landowners recognize the recreational and aesthetic value of wetlands, making them valuable assets for personal enjoyment, hunting leases, or family gatherings.

With the Wetland Wave program, participating landowners are both a powerful contributor to the water quality solution in Iowa and the future of Iowa's conservation movement.

Photo: Conservation Media Library

Wetlands serve as wildlife habitats for amphibian species **190** and **5,000** plant species

Photo: SWCS/Conservation Media Library

On average, wetlands have been found to reduce nitrate-N concentration in water by

52%

Wetlands are an edge-of-field practice, meaning that they do not impact in-field management, but may require that some land is taken out of production.

Photo: Lynn Betts

The WETLAND WAVE program covers **100%** of the costs for designing and installing wetlands.

Wetlands provide many benefits to the landowner, local community, and society.

What is the Wetland Wave?

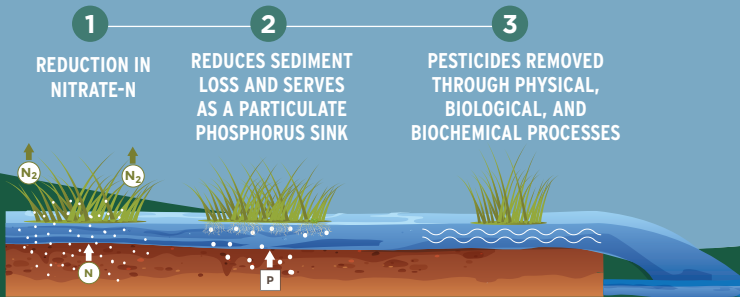
The "Wetland Wave" leverages state and private donor funding to selectively identify ideal parcels of land that could hold a highly effective wetland, those that take the minimum number of acres out of production but treat a large amount of upland drainage acres. The main goal of the partnership is to select several landowners and parcels of land all at once – effectively "batching" or "grouping" several wetland projects in the same "wave." Hence, a Wetland Wave!

The "batching" approach has been used with cover crops and edge of field structures like saturated buffers and bioreactors to great success. The Wetland Wave is focused on the expansion

of the batching model to wetlands. In this way, we can approach conservation from multiple levels and angles: in-field soil health, edge of field water quality, and landscape-scale nutrient and soil retention.

Goals of the Wetland Wave program are to create awareness of how wetlands provide significant benefit to both water quality and flood control and are mutually beneficial to landowners, the community, and regional wildlife, and to successfully bring landowners on board with our program. Wetland Wave will assist in the design and construction of the wetlands, and compensate the landowners for any land that is taken out of production.

HOW WETLANDS IMPROVE WATER QUALITY

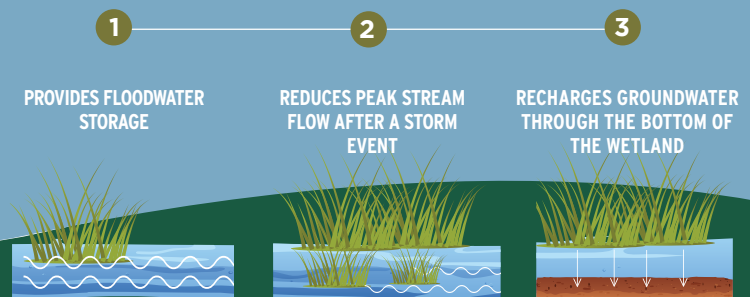


1 REDUCTION IN NITRATE-N
DENITRIFICATION
 Microorganisms convert nitrate to N₂ gas which makes up 78% of the atmosphere. Wetland design is typically shallow to promote denitrification.

2 REDUCES SEDIMENT LOSS AND SERVES AS A PARTICULATE PHOSPHORUS SINK

3 PESTICIDES REMOVED THROUGH PHYSICAL, BIOLOGICAL, AND BIOCHEMICAL PROCESSES
 Slower moving runoff produces less soil erosion. Excess nutrients, such as nitrogen and phosphorus, are absorbed by the roots of the plants. This helps remove the nutrients before they flow into creeks and rivers downstream.

WETLANDS AND FLOOD REDUCTION



1 PROVIDES FLOODWATER STORAGE
 Wetlands intercept precipitation runoff and runoff is slowed compared to traveling straight across the landscape

2 REDUCES PEAK STREAM FLOW AFTER A STORM EVENT
 With temporary storage provided in wetlands, the volume and timing of downstream flood peaks are reduced.

3 RECHARGES GROUNDWATER THROUGH THE BOTTOM OF THE WETLAND
 Seepage through the bottom of the wetland converts surface water into groundwater.

Illustrations © OGC, LLC

100% State & Private Funded

The Wetland Wave Program (WWP) utilizes state and private funding so that participating landowners have NO out-of-pocket costs, and even receive compensation for any land that is taken out of production. All the costs for designing and installing wetlands are

100%
 of the costs for designing and installing wetlands are covered by the program

covered! Included is site planning, engineering and design, excavation and construction, tile redirection, and planting.

A Bespoke Program

The Wetland Wave Program is not open to just anyone; it's a tailored, "bespoke" program, where specific parcels that match the qualifications of a wetland project are targeted in priority areas. If a landowner is contacted by the WWP, it means their property has been identified as an ideal, cost-effective site that

treats a maximum drainage area with minimum impact on the cropped landscape.

Limited Time Window

Because there is no guarantee this program will be re-funded in the future, this is essentially a once-in-a-lifetime window. Landowners who qualify are strongly encouraged to take advantage of the opportunity to create a valuable wetland project on their land that will reap benefits for generations.

SIGN UP

Enrollment is on a continuous basis through **December, 2025**. All WWP eligibility requirements must be met. Established wetlands must be positioned and designed so as to not impact the drainage rights of upstream or downstream landowners.

FOR DETAILS AND MORE INFORMATION, CONTACT:

Michael James / WQI Coordinator
 Polk Soil & Water
 Conservation District
 515 491 7544
 michael.james@ia.nacdnet.net

Ruth McCabe / Wetland Coordinator
 Heartland Cooperative
 515 418 8358
 rmccabe@heartlandcoop.com

PARTICIPATING AGENCIES

